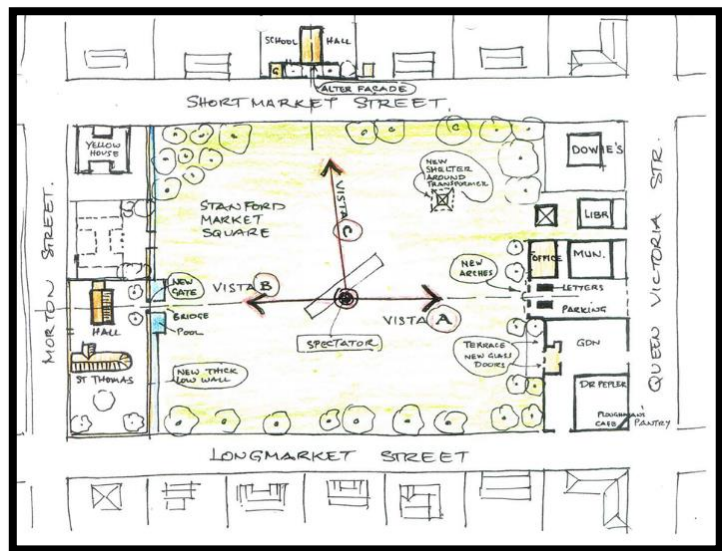


STANFORD CONSERVATION

NEWSLETTER JULY 2020

REVITALISATION REALITY – TIME TO GET EXCITED

The vision to open up the village green (sketch on the right) was created in 2001 by the highly acclaimed South African architect Michael Sutton, who at that stage lived in Stanford and was serving on Stanford Conservation's Heritage Committee. Age 95 and now living on an idyllic Greek Island, he was ecstatic to learn of his 'dream come true'.



Then, 13 years later, along came landscape architect Bernie Oberholzer (another Stanford resident and member of the Heritage Committee) with a comprehensive revitalisation plan for the village*. As all these proposed developments are on municipal land, Stanford Conservation (SC) presented the concepts to the entire municipal management team in 2014; and they were favourably accepted. This was the beginning of a long process of discussions between SC and the municipality to incorporate the plan as part of the municipal Integrated Development Programme (IDP) which is mandatory before any funds can be allocated to capital projects, as well as for any external funding applications.

Six years later it is all starting at once!

- **Market Square Precinct**



Wall down.....



One post box left...



GONE!!!

- **Community Centre precinct projects:**

Bezuidenhout Street sidewalk completed (2019) and the tarring of the street completed (2020).

Tarring of De Bruyn Street will commence in this municipal financial year.

- **Village green precinct:**

Longmarket and Shortmarket Street will be paved in this municipal financial year, with enough parking to reduce town planning parking requirements for properties along Queen Victoria Streets.

- **Mill Stream meander:**

The area below the Willem Appel dam wall is being cleared at present under the guidance of the Wandelpad team (read article further down).

A special thank you to Dudley Coetzee, our Ward Councillor and at present the municipal mayor. Without his support, drive and belief in the revitalisation plan, we would not have achieved so much in six years. It would furthermore not have been possible without the administrative skills of Kat Myburgh, our municipal area manager.

-
- * A comprehensive revitalisation plan can be read on our SC [website](#):

WANDELPAD

- Thanks to the generosity of various villagers, our team has managed to continue maintaining the Wandelpad by keeping the pathways mowed, emptying poo bins and refilling bag containers, cleaning up litter in stormwater outlets, staking trees and removing alien invasive species.
- 13 Buddleja saligna were planted at the north-eastern end of the Wandelpad (near the R43 bridge). We hope this will be the start of a small plantation which will block the view of the new bridge and perhaps even help as a sound barrier in years to come. The Buddleja were a donation from Debbie Alexander of Home Grown Landscapes in Stanford. All donations help us carry on our work in the village and on the Wandelpad and are most appreciated!



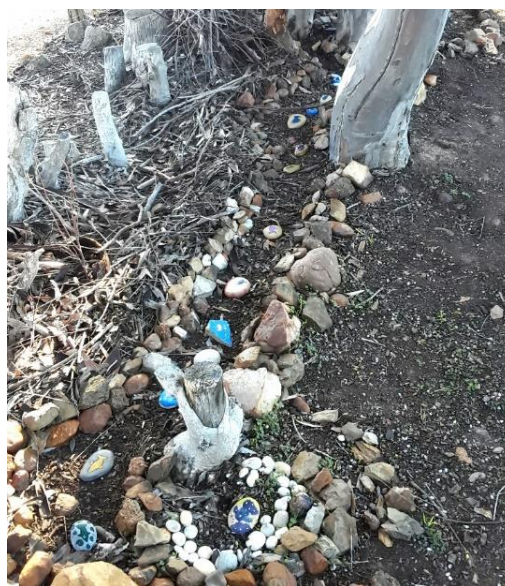
- New memorial benches are in the process of being installed along the Wandelpad. These are sponsored by various individuals and organisations in memory of Stanford residents and will be situated in areas that will enhance the Wandelpad where they can be enjoyed by the villagers.

- The Mill Stream meander extension of the Wandelpad has begun. With funds received from Whale Coast Conservation, the area between the Willem Appel Dam wall and Kiewietz Street is being cleared at present. The entire area is infested with invasive species, mainly phragmites reeds, *sambucus nigra* (elder) and syringa. The municipality has planted seven mature trees on the southern side of the Mill stream and older trees in this area will be trimmed at the bottom for safety purposes. The unsightly dumping area will also be levelled. The community on the south side of the cleared area appear to support the initiative as Wandelpad team member Ernest has mown and cleared the outside of the properties facing the Mill Stream. Another reason for clearing the reeds and alien species is to locate the drainage valve for the dam, which needs to be unblocked so that the water can run down the Mill stream thus flushing the dam and allowing fresh water to flow into it. This will in turn, encourage wildlife to return and flourish.



Some before and after photos of the clearing operation

- Residents are encouraged to further beautify the Mountain View section of the Wandelpad (Stanford's north-western boundary) by painting rocks and placing them along the path. The Little River Cottage School recently beautified a section as part of their end-of-term project.



SCORE

With no Swop Shop activities possible during Lockdown, SCORE teamed up with the STAR literacy project and Creative Works to provide contents for educational activity packs for children. These were distributed at the food relief food kitchen points. We would like to thank the main stationary donors (Overstrand municipal grant and Stanford Rotary) that enabled us to make this educational contribution towards keeping children busy during these trying times. A sincere thanks to Keith and Judi Brown for spearheading this project.

OTHER PROJECTS

- The Spekboom hedge project initiated by Tracy Paton was successfully completed in June/July. 122 shoots were planted by residents to form a 50m hedge that will protect children at the Queen Victoria/Moore Street playground from accidentally running into the street. This is Stanford Conservation's contribution to the national Spekboom Challenge towards reducing the carbon footprint. The chances of these Spekboom spreading into the natural fynbos (which is only possible by branches being broken off and taking root in other areas) is as miniscule as the Spekboom escaping from many Stanford gardens.



- The municipal garden at the entrance of Stanford has been sadly neglected over the past year. According to provincial road regulations, no bushy trees or shrubs that obstruct the view

for drivers are allowed within 32 metres from an intersection. The maximum height allowed is 1.2 metres or trunks no more than 15cm in diameter for plants exceeding this height. We would like to thank Anke Esterhuyzen for cleaning up the area

along with Ernest Sitsha (who is contracted 2 days/week to assist Stanford Conservation to maintain our Wandelpad and green belts). It unfortunately meant some indigenous Bitou needed to be cut down; but after all - that is what maintenance is all about.



OTHER MATTERS

- The SCT AGM (originally planned for 23 April) was postponed due to the coronavirus pandemic and will be taking place as a possible webinar – or a simple email to members. Strange times ask for innovative activities!
- Think & Drink has been postponed until lockdown regulations allow us to get together again.



MEMBERSHIP

If you like what we are doing – please consider joining Stanford Conservation. Membership fees are only R200 per year, per individual or family. We are a non-profit organisation (NPO) run entirely by unpaid volunteers. We raise funds through external grants, donations and membership fees, as well as specific fundraisers like 'Think & Drink'. These funds are used to support the various SC environmental, architectural and social initiatives.

Our sincere thanks to everyone who has made a donation during the past few months to enable us to pay Ernest to continue maintaining the Wandelpad. Times have been tough with a major source of income for Wandelpad maintenance, our monthly Think & Drink Quiz evenings, on hold since February due to the Covid-19 Pandemic. As such, we urge you to pay your annual R200 membership to enable us to continue this worthwhile work!

Please contact us at stanfordconservationtrust@gmail.com should you like to become a member – or make a donation (which is always welcome) please see our banking details below.

Stanford Conservation

NEDBANK Hermanus (Branch code 13451200)

Savings Account No. 2383001805

For more information, please visit our [Stanford Conservation website](#) .

Stay safe Stanford!